

REPLACING THE BULB

1. Unplug the light and allow it to cool.
2. Turn the locking ring counter clockwise to remove the lamp holder (02).
3. Carefully remove the old bulb by firmly pulling on the base. Carefully install the new bulb.
4. Reinstall the lamp holder and locking ring. Plug the light into a properly grounded electrical outlet.

CARE AND MAINTENANCE

To maximize performance, periodically disassemble the unit to clean the glass tube.

IMPORTANT: Be sure that the entire unit is completely dry and gaskets are properly seated when reassembling. Failure to do so will result in water leakage, which can cause damage.

1. Disconnect the UV light from the outlet. Be sure to allow sufficient time for the light to cool before disassembling the light.
2. Unscrew the locking ring, and pull out the light unit.
3. Carefully pull out the glass tube holder by twisting and then pull out.
4. Use biodegradable soap and warm water to clean the glass tube.
5. Reassemble and be sure that all gaskets and o-rings are seated properly.

TROUBLESHOOTING:

If the light fails to operate:

- Check to ensure the power cord is plugged in and the light is getting power.
- Check to ensure that the lamp holder is screwed completely into the body. (This product will not operate unless it is fully assembled with the lamp holder screwed completely into the body.)
- Check bulb to ensure that it has not burned out. Replace the bulb as necessary.

LIMITED WARRANTY

This product is warranted to the original user against defective materials and workmanship for a period of 12 months. Our limited warranty does not cover any costs associated with the installation or removal of products subject to warranty claims or the cost of return of the product. The warranty will commence from the date of purchase. Replacement liability is limited to any part or parts of the unit which have failed due to defective material or workmanship. Proof of purchase is required for all claims against the limited warranty. This warranty does not extend to damage of the product or part resulting from accident, misuse, alteration, neglect, abuse, improper installation or normal wear and tear to the product(s). This limited warranty extends only to the original user of the product.

For more information on this and other products, please visit our web site:

www.angelodecor.com

To contact us regarding this unit, your options include:

Email: customersupport@angelodecor.com | Phone: (780) 453 - 6646 | Fax: (780) 453- 6620

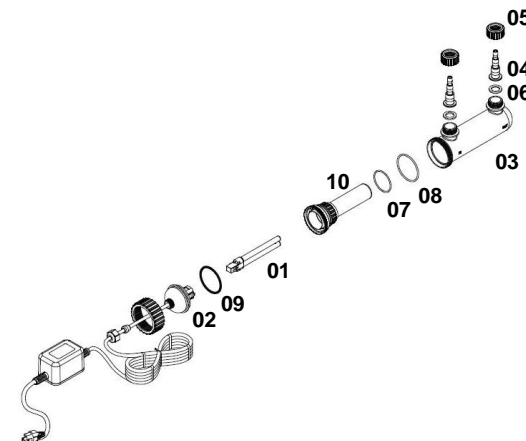
Angelo Décor International Inc. | 15840 – 118th Avenue | Edmonton, AB | T5V 1C4



9 WATT UV CLARIFIER AD46530

COMPONENTS

01. UV Bulb
02. Lamp Holder
03. Lamp Housing
04. Adapter
05. Adapter nut
06. Adapter Gasket
07. O-ring 1
08. O-ring 2
09. Lamp Holder Gasket
10. Bulb Cover



BEFORE YOU BEGIN

Before you get started check the packaging to ensure you have all parts and compare against packaging and illustration above. Do not assemble or attempt to operate the unit if any parts are missing. Contact customer support regarding any missing parts or components.

IMPORTANT INFORMATION

- This product will not operate unless it is fully assembled with the lamp base screwed completely into the housing.
- UV rays are harmful to your eyes and skin. The indicator portal will remove the harmful effects of the UV light but still allow you to see the bulb operating.
- Do not attempt to operate this product unless the lamp is completely assembled within the light housing.
- This product is to be operated within the following temperature range: 32°F - 95°F (0°C - 35°C).
- This product conforms to the Code of Federal Regulations (CFR) requirements including, Title 21, Chapter 1, Subchapter J, Radiological Health.

Questions, problems or missing parts?

Email our Customer Support team at: customersupport@angelodecor.com

⚠️ WARNINGS AND CAUTIONS

WARNING

- **WARNING** – Improper connection of the appliance-grounding conductor can result in a risk of electric shock. Check with a qualified electrician or service representative if you are in doubt whether the appliance is properly grounded. Do not modify the plug provided with the appliance; if it will not fit the outlet, have a proper outlet installed by a qualified technician.
- Do not operate any appliance if it has a damaged cord or plug, or if it is malfunctioning or if it is damaged in any manner.
- Always unplug the appliance from the outlet before putting on or taking off parts, before cleaning or when not in use.
- Connect only to a circuit that is protected by a ground-fault circuit-interrupter (GFCI).
- Risk of Electric Shock: Do not use the UV filter if the quartz tubing around the lamp is broken. Immediately unplug and seek an authorized repair service or discard the unit.
- **GROUNDING INSTRUCTIONS** – This appliance must be grounded. In the event of a malfunction or break down, grounding will reduce the risk of electric shock by providing a path of least resistance for electric current. This appliance is equipped with a cord having an appliance-grounding conductor and a grounding plug. The plug must be plugged into an appropriate outlet that is installed and grounded in accordance with all local codes and ordinances.

CAUTION

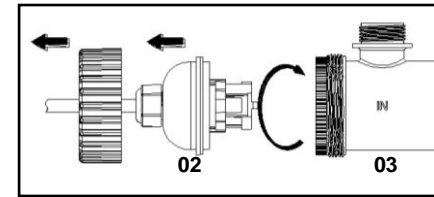
- UV light may cause irritation to the skin and/or eyes. Avoid exposure.
- **DANGER – ULTRAVIOLET RADIATION** – disconnect power before replacing lamp.
- Prolonged or repeated exposure to UV light may have adverse physical effects including, severe damage to your skin and eyes. Seek immediate medical attention for overexposure to UV radiation.
- Keep the cord away from high temperatures or other heat sources.
- Do not lift the light or the transformer by its power cord.
- This light assembly has not been investigated for use in swimming pools or hot tubs.

SPECIFICATIONS

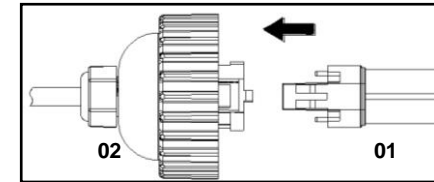
LAMP VOLTAGE	60V	LAMP CURRENT	0.2A
LAMP POWER	9 W	RATED FREQUENCY	60 HZ
UV IRRADIANCE	35 $\mu\text{W}/\text{cm}^2$	BULB LIFE	8000 HOURS
BULB MODEL NUMBER	AD46529	UV WAVE LENGTH	UV(C) · 254 nm

ASSEMBLY INSTRUCTIONS

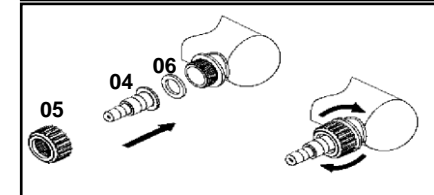
1. Open and remove the light assembly from the package and untie the power cord. Turn the locking ring counterclockwise to remove the lamp holder.



2. Install the bulb into lamp holder (02). Reinstall the lamp holder and locking ring.

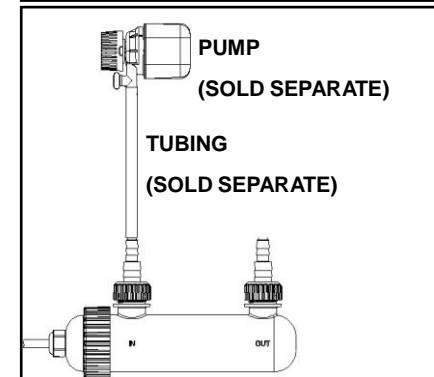


3. Install the adapter gasket (06), adapter (04), and adapter locking nut (05) onto the inlet and outlet of the lamp housing.



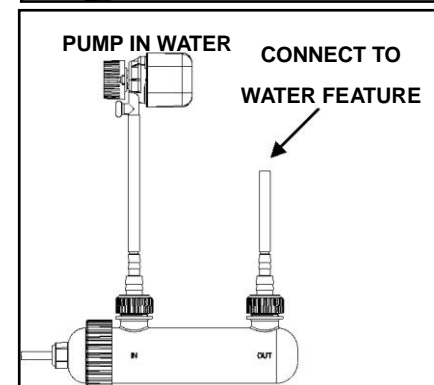
NOTE: FOR A PROPER SEAL, THE PARTS MUST BE INSTALLED IN THIS SPECIFIC ORDER.

4. Connect tubing from the outlet of your pump to the inlet. The adapters included can connect to 1/2-in. or 3/4-in. tubing. We recommend 1/2-in. tubing for optimum performance.



NOTE: THE INLET IS MARKED "IN" ON THE LAMP HOUSING

5. Connect tubing to the outlet. The other end can be connected to a spouting statue, waterfall, or any other water feature for your pond.



NOTE: THE OUTLET IS MARKED "OUT" ON THE LAMP HOUSING.

6. Plug the unit into a properly grounded electrical outlet.

