

CARE AND MAINTENANCE

- Before attempting any maintenance or cleaning, always **disconnect the pump** from the power supply and remove from pond.
- Clean the components when they are visibly soiled or when a drop in performance is detected.
- Clean with a soft brush using either white vinegar, or warm water and gentle soap.
- Remove all components from the pond when temperatures fall below 4° C (38° F) and properly store in a dry area that prevent the components from freezing.

TROUBLESHOOTING

If the nozzles or diverter fail to operate, first check the pump:

- Insure the power cord for the pump is plugged in to a GFCI receptacle that has a stable power supply running to it.
- Check to ensure pump it is fully submersed in water.
- Check to ensure the pump impeller and housing are clean.

If performance is not satisfactory or the water does not flow evenly:

- Check the pump outlet and tubing, nozzles, features, spouting statues etc. for kinks or obstructions.
- Check the spray nozzles for obstructions or a loose connection

LIMITED WARRANTY

These components are warranted to the original user against defective materials and workmanship for a period of 12 months. Our limited warranty does not cover any costs associated with the installation or removal of products subject to warranty claims or the cost of return. The warranty will commence from the date of purchase. Replacement liability is limited to any part or parts of the unit which have failed due to defective material or workmanship. Proof of purchase is required for all claims against the limited warranty. This warranty does not extend to damage of the product or part resulting from accident, misuse, alteration, neglect, abuse, improper installation or normal wear and tear to the product(s). This limited warranty extends only to the original user of the product.

For more information on this and other products, please visit our web site:

www.angelodecor.com

PLEASE DO NOT RETURN THIS UNIT TO THE STORE.

To contact us regarding this unit, your options include:

Email: customersupport@angelodecor.com |

Phone: (780) 453 - 6646 | Fax: (780) 453- 6620

Angelo Décor International Inc. | 15840 – 118th Avenue | Edmonton, AB | T5V 1C4



AD42136 UNIVERSAL NOZZLE KIT

PACKAGE CONTENTS

12. Large Fleur des Lys Nozzle

11. Bell (Apple) Nozzle

10. Trumpet Nozzle

09. Foaming Jet Nozzle

08b. Dual Tier Nozzle Top
(Can be used individually)

08a. Dual Tier Nozzle Base

07. Pivoting (swivel) connector

06. Extension tubes (4)

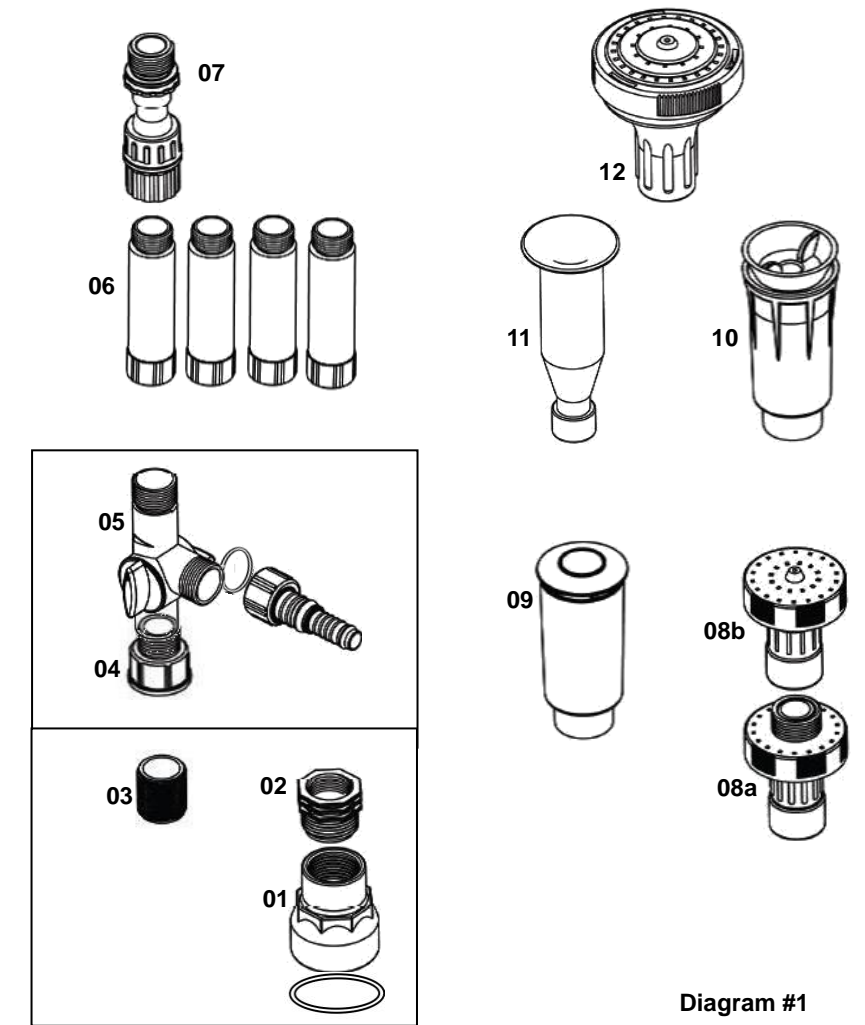
05. Diverter assembly (3 pieces)

04. 1" female – 3/4" male adapter

03. 1" Threaded male connector

02. 1.25" male – 1" female adapter

01. 1.5" – 1.25" female reducer



THANK YOU FOR BUYING A POND BUILDING SERIES™ PRODUCT!

These items are primarily intended for use with our Eco Pump Series: AD40750 (750GPH), AD41250 (1250GPH), and AD42505 (2500GPH)

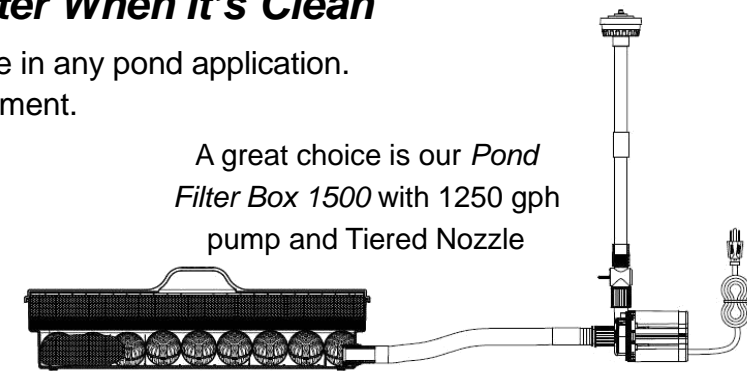
It is also **designed to fit** our Pro-Grade Series, (600 / 800 / 1000 GPH) or most other brands of pumps that have a **standard male threaded 1" output**. Pump outputs smaller than 1" require additional adapters to be compatible. We recommend using pumps capable of a **Minimum of 500gph** to maximize potential dramatic effects of these quality features.

IMPORTANT ADVICE – It Works Better When It's Clean

We **strongly recommend the use of a filter** for use in any pond application. Fountain Nozzles work best in a clean pond environment.

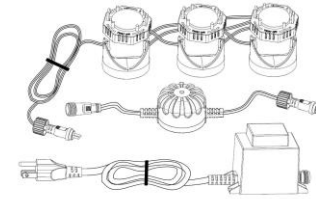
We offer many different styles of filtration products that are suitable for virtually any environment.

A great choice is our *Pond Filter Box 1500* with 1250 gph pump and Tiered Nozzle



Please visit our website (www.angelodecor.com) for more information and how-to videos regarding assembly and properly use this product.

Complete your project with Lighting!



3 X 10 Watt Spotlights with Sensor
AD43131

ASSEMBLY INSTRUCTIONS

The 17 pieces included in this kit can assemble in a variety of ways to suit your project. There really are very few “wrong ways” to use this universal kit. Below we outline our **recommended method**.

Before you begin your assembly, double check your plan:

- Review the parts list (diagram #1), as well as any included parts with your pump (sold separately), to determine what you will need to properly mount the chosen assembly to your pump.
- Identify height required to feature the nozzle at the proper level in your pond. Use extension tubes to position the entire spray head approximately 6 - 12 inches above the water line.
- Provide a stable base for your pump to keep it 2” – 4” from the bottom of the pond. If a perfectly level area is not available, use the pivoting **swivel connector near the top of your assembly** to compensate, allowing adjustment to keep nozzle head straight.
- The 6 popular spray patterns included provide visual and functional options that suit most pond sizes and environments. Be sure to choose spray patterns that will **keep all of the spray inside your pond area**.

Example 1 – using 750gph Pond Pump: (AD40750)

Add 1” threaded adapter to pump output.
(Plumbers Teflon Tape is recommended)

Alternate method: The diverter could be inverted and threaded directly to the pump. However the dual feature adjustment indicators would also appear inverted. See below for more on the use of the diverter.

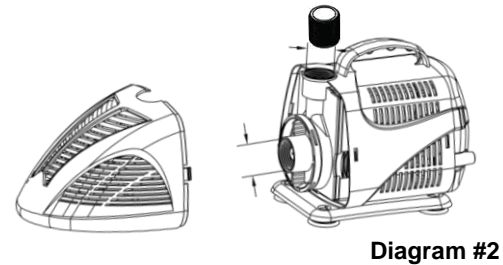


Diagram #2

Example 2 - using 1250gph or 2500gph Pond / Waterfall Pumps: (AD41250 / AD42505)

1. Using the rubber washer, attach the 1.5” – 1.25” female reducer
2. Attach the 1.25” – 1” adapter
3. Insert 1” threaded adapter
(plumbers Teflon Tape is recommended for all male fittings)

Alternate method: The diverter could be inverted, and threaded directly to the 1.25” – 1” adapter. However the dual feature adjustment indicators would also appear inverted. See below for more on the use of the diverter.

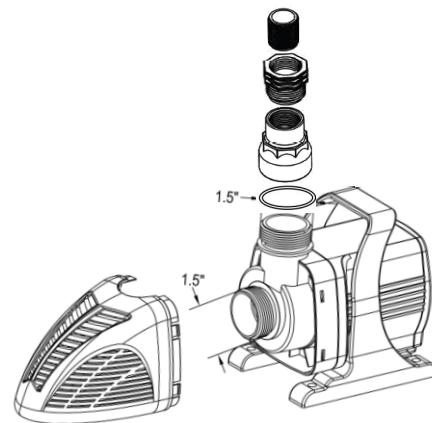


Diagram #3

PROPER USE OF THE FLOW DIVERTER

1. Use washer to mount barbed fitting
(Cut off 1/2” area if using 3/4” tubing)
2. Attach 1” – 3/4” adapter to diverter base
3. Attach to 1” Male output on pump
(plumbers Teflon Tape is recommended for all male fittings)

Alternate method: If the diverter is used inverted to this method, it will still work. However the dual feature adjustment indicators would also appear inverted and potentially cause confusion when adjusting flow.

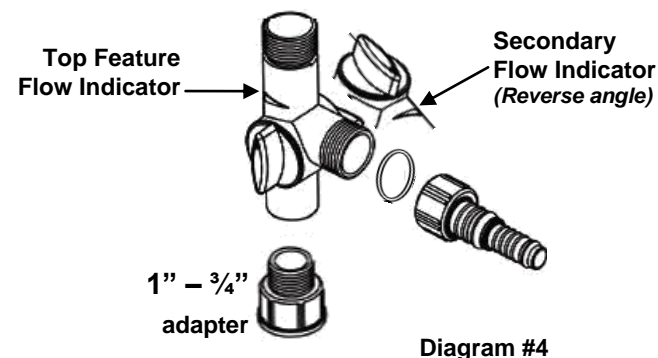


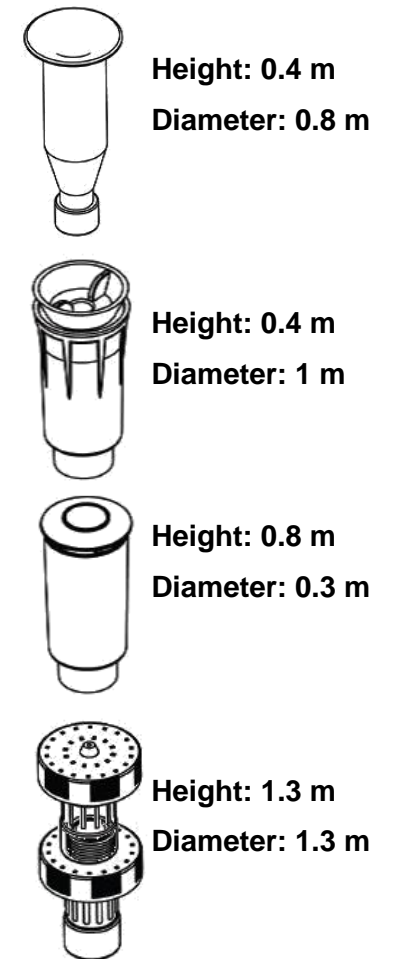
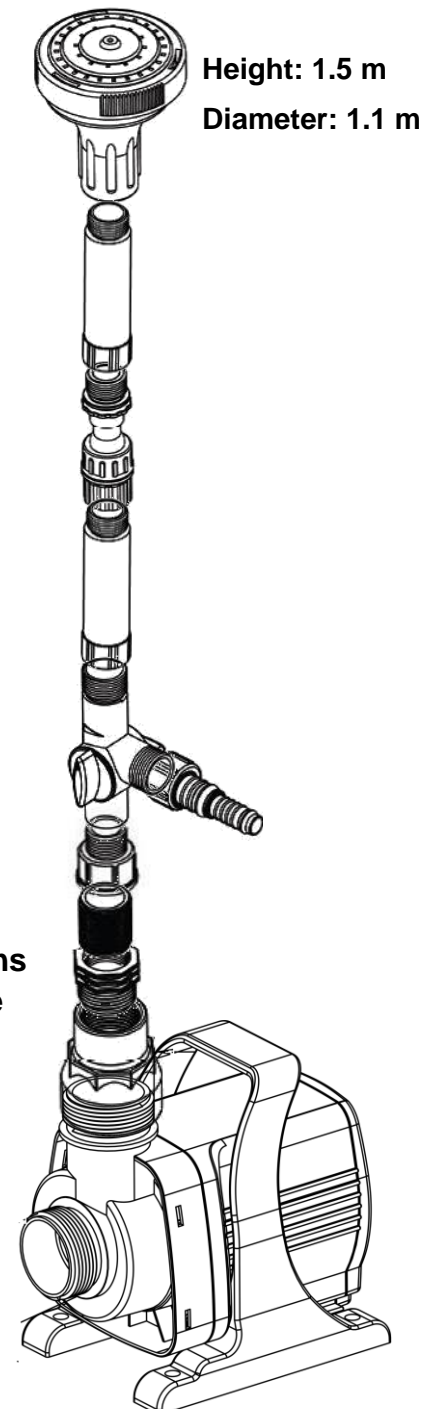
Diagram #4

FINAL ASSEMBLY AND USE

Now the choice - Which spray nozzles to use?

- You will need to test the nozzles for height and diameter before finalizing your plan.
Be sure to set nozzles so all spray and splash falls within the main pond area.
- The supplied extension tubes will allow easy placement in deeper ponds.
- Although using all included connections to maximize assembly height is workable, using as few connections as possible will make assembly easier, and maximize spray height and water flow.
- The Pivoting (swivel) connector is best used near the top of the assembly. Attaching this feature lower down may cause the nozzle to tilt due to pressure.
- Using the 1250gph Pump, the following spray heights and diameters are approximated for reference:

Recommended Assembly



Use Dual Flow Control to adjust each feature

Be sure these connections are tight and secure