

TROUBLESHOOTING

Always disconnect the pump from the power supply before handling.

If the pump, nozzles or optional water feature fail to operate:

- Check to make sure the power cord is plugged in and the receptacle has power running to it.
- Check to ensure pump is fully submersed in water.
- Check the tubing for kinks or obstructions, and pump outlet is clear of objects.
- Check if water features or fountain nozzles are clean and clear.
- Check the spray nozzles for obstructions or a loose connection
- Check water inlet for any obstructions.

If water flow has not returned:

- Remove front cover and impeller cover to access rotor area.
- Rotate the rotor to ensure it is not broken or jammed. Remove the rotor to check it is free from any debris.
- Rinse the cover and re-assemble.

LIMITED WARRANTY

These components are warranted to the original user against defective materials and workmanship for a period of 12 months. Our limited warranty does not cover any costs associated with the installation or removal of products subject to warranty claims or the cost of return. The warranty will commence from the date of purchase. Replacement liability is limited to any part or parts of the unit which have failed due to defective material or workmanship. Proof of purchase is required for all claims against the limited warranty. This warranty does not extend to damage of the product or part resulting from accident, misuse, alteration, neglect, abuse, improper installation or normal wear and tear to the product(s).

This limited warranty extends only to the original user of the product.

For more information on this and other products, please visit our web site:

www.angelodecor.com

PLEASE DO NOT RETURN THIS UNIT TO THE STORE.

To contact us regarding this unit, your options include:

Email: customersupport@angelodecor.com | Phone: (780) 453 - 6646 | Fax: (780) 453- 6620

Angelo Décor International Inc. | 15840 – 118th Avenue | Edmonton, AB | T5V 1C4



Pond Building Series

AD40501

500gph Pump and Nozzle Instructions

THANK YOU FOR BUYING A **POND BUILDING SERIES™** PRODUCT.

PACKAGE CONTENTS

01. Tiered Spray Nozzle
02. Dual Feature Diverter
03. Bell Spray Nozzle Head
04. Trumpet Spray Nozzle Head
05. Riser Tube Couplers (2)
06. Riser Tube Pump Connector
07. Threaded Connector
08. Riser Tubes (3)
09. Bell and Trumpet Nozzle Base
10. Foaming-Jet Spray Nozzle
11. Double-Tiered Spray Nozzle
12. 500gph Pump with Pre-Filter

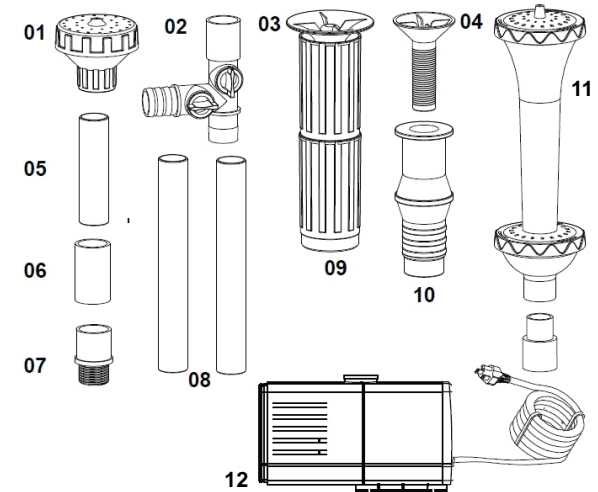


Diagram #1

IMPORTANT! - BEFORE YOU BEGIN

This pump is designed for use in “clean water applications” when using **ONLY** the integrated pre-filter cartridge. It is not compatible with salt water.

Using this series of pump in an outdoor functional pond environment without using proper filtration will cause increased maintenance and could result in pump failure due to a build-up of debris. **This type of improper pump care is not covered under warranty.**

We strongly recommend the use of a filter box for use in any pond application.

The Included Pump Pre-filter provides basic filtration, however a filter box should be used with any pond application that includes fish and plants.

Pond Filter Box 600 using Diverter and Tiered Nozzle

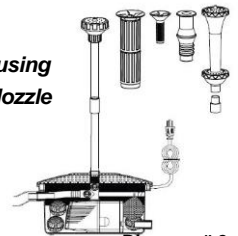


Diagram #2

QUESTIONS?

PLEASE DO NOT RETURN THIS PRODUCT TO THE STORE.

Visit our website (www.angelodecor.com) for more information and videos on how to assemble and properly use your product.

WARNING: SAFETY AND ELECTRICAL CONNECTIONS

The pump is supplied with 15 feet of 3 core electrical cable, permanently connected and sealed to the motor. The cable cannot be replaced. Pump should be discarded if cord is damaged.

- Pump must be connected to an approved ground fault circuit interrupter (GFCI) receptacle. Do not connect to any voltage other than that stated on the pump.
- Warning: Always unplug or disconnect from the electricity supply before putting hands in the water, while equipment is being handled in any way.
- Do not use the supply cable to lift the pump as this may cause damage.
- Do not operate or leave the pump in freezing conditions.
- Do not allow the pump to run dry. The pump must be fully submerged.

PRE-ASSEMBLY PREPARATIONS

- Identify the height of riser required to feature the nozzle at the desired level in your pond. Choose the riser assembly that best suits your needs.
- Assess the parts required from diagram #1, to determine what you will need to properly mount the chosen assembly to your pump.
- These five popular spray patterns provide you visual and functional options that suit most pond sizes and environments.

ASSEMBLY INSTRUCTIONS

Single Feature use

1. Attach threaded connector (07) to the pump output.
2. Attach riser tube (s), and your Fountain Nozzle choice.

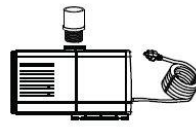


Diagram # 3

Dual Feature use, Fountain Nozzle With a Spouting Statue / Waterfall (not supplied)

1. Attach connector (6) and diverter
 2. Attach riser tube (s), and Fountain Nozzle
 3. Use 3/4" ID Tubing (not supplied) to attach to your water feature.
- The diverter features a dual-flow control.

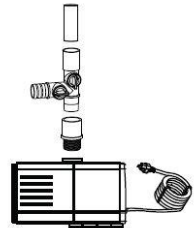


Diagram # 4

- Each feature (spray nozzle and water feature) can be adjusted independently of the other as needed

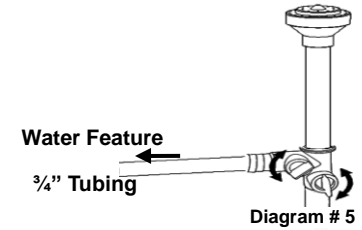


Diagram # 5

Fountain Nozzle Head Assembly:

- Spray nozzle heads should be assembled as shown in Diagram # 6.

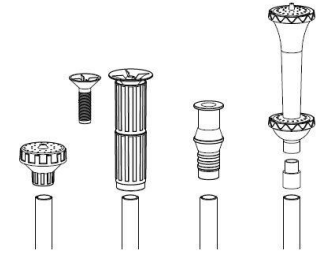


Diagram # 6

Please Note: Trumpet and Bell Nozzle share the same base unit. The top piece is threaded into the base to allow adjustment of the water spray diameter.

INSTALLATION IN POND

- Place pump on a flat brick or stone approximately 2" – 4" from the bottom of pond to help prevent debris from interfering with the pump's performance.
- Make sure the cable is securely routed to the GFCI electrical supply and is protected against abrasion and damage.

CARE AND MAINTENANCE

Before cleaning, always disconnect the pump from the power supply and remove from pond.

- Do not pump heated liquids. Unit is tested for fresh water use only.
- Pond water must be kept clean using proper filtration components.
- Always operate the pump completely submerged.
- Disassemble the unit periodically to clean mineral deposits and build up of debris inside the impeller and rotor.

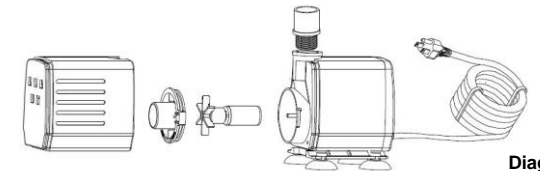


Diagram # 7

- Clean components when visibly soiled or a drop in performance is noted.
- Use a cloth or soft brush with warm soapy water when cleaning.
- Do not operate this pump below 0°C, as FREEZING DAMAGE MAY OCCUR.