

## Thank you for buying an Angelo Décor Fountain!

We hope you will find these instructions helpful in setting up your fountain.

If you have any issues with this item, please **DO NOT** return the unit to place of purchase.

Please visit our web site, [www.angelodecor.com](http://www.angelodecor.com), for assistance and warranty information.

**First unpack carton carefully, arranging parts safely in your working area.**



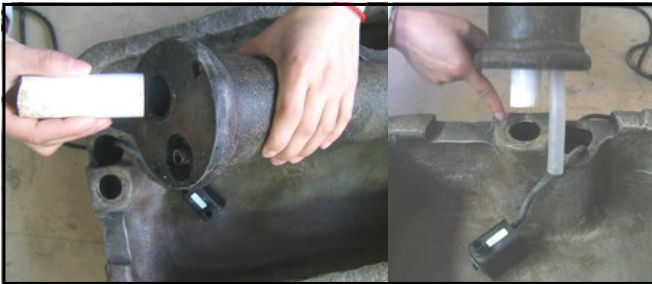
Feed the pump cord through the cord hole.



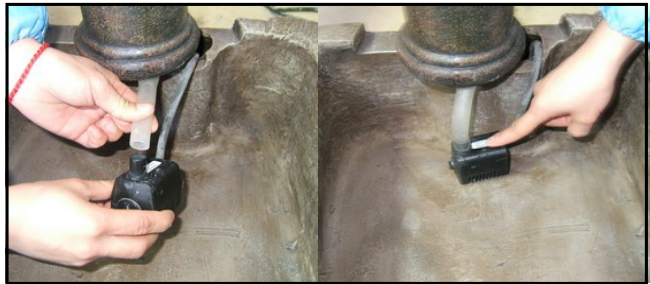
Align the cord with the groove at the base of the bowl.



Pump is set to full strength. If splash is a concern, adjust the flow as desired.



Insert the "slip fit" pipe into the top piece as shown above left. Slip the top into place by aligning the pipe with the corresponding hole.



Connect the tubing to the pump. Be sure it sits flat inside the housing without kinking the tubing.



Install the pump access door. This feature makes it easier for you to clean and adjust your pump.



Install spill bucket using grooves. Position bucket so it will spill forward.

The final assembly should look like this



Now simply fill with clean water and plug into a grounded GFCI outlet.

**We recommend keeping bowl 3/4 full of water to avoid pump burnout.**

