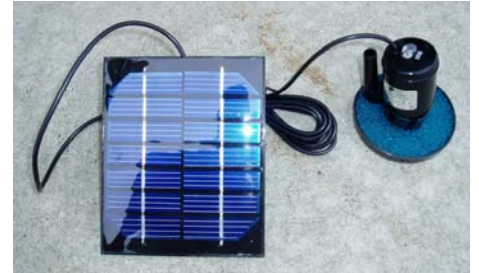


Solar Alert and Troubleshooting Guide

Solar pumps offer the convenience of placing a fountain or feature piece in a remote location without having to worry about extension cords. The advanced technology of this product requires that the unit is properly setup and maintained. Should you experience problems, this troubleshooting guide will assist to correct the problem.



The unit will operate at its optimum capacity in full direct sunlight. The ***power supply to the pump will fluctuate with the amount of direct sunlight hitting the panel.*** This is normal; the unit may even cease operation for durations of cloud cover or if the panel is shaded.

The unit needs to be clean, even the slightest amount of dirt or debris will affect its operation. This includes the pump, filter, panel and connection points.

If the pump appears to be non-operational over a long period of time you may need to check the following:

Ensure that the pump is fully submersed and all connections are secure and free of debris

- As this is a lower volume pump, any kinks, debris or soil coupled with a lack of direct full sunlight will affect the flow of water and in some cases cause it to cease

Ensure the panel is getting full direct sunlight, as this will affect the volume and operation of the pump.

Ensure that the panel is clean, and free of any debris or build-up



If the problem persists....

- Remove the impeller cover from the base of the fountain as illustrated

- Ensure the impeller is free of debris and will rotate without resistance
 - Even the slightest amount of dirt or debris can cause this impeller to jam
 - Rotating the impeller or tapping on the base of the pump can resolve this problem

