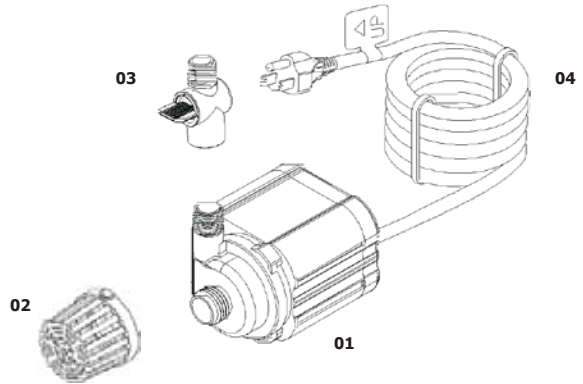


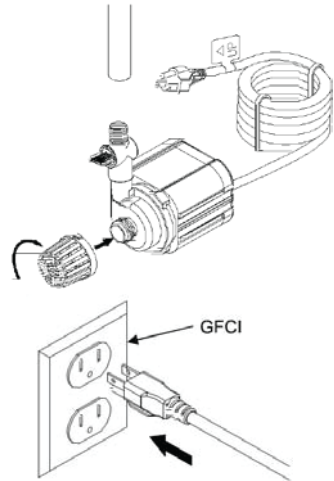
COMPONENTS

- 01. Pump
- 02. Inlet screen
- 03. Flow Control
- 04. Cable



OPERATING INSTRUCTIONS

1. Attach the inlet screen to the intake of the pump.
2. Attach the flow control to the pump.
3. Attach the tubing (not included) to the flow control.
4. Adjust the flow control to desired volume.
5. Place the pump into the water and connect it to a proper power source.



WARNING

Risk of electrical shock. This pump is supplied with a grounding conductor and grounding-type attachment plug. To reduce the risk of electrical shock, be certain that it is connected to only a properly grounded, grounding-type receptacle (GFCI). Inspect cord for damage before installing and/or performing maintenance. Replace the entire pump assembly if damage is found.

Do not remove the grounding pin from the power cord plug.

Risk of electrical shock: This pump has not been investigated for use in swimming pools or marine areas.



CAUTION

This pump has been evaluated for use with water only.

Use a proper power source as indicated on the pump label.

Keep the cord away high temperatures or other heat sources.

Avoid using the pump when water temperatures fall below 0°C

Do not use the pump in water temperatures exceeding 30 °C.

Do not pump heated liquids.

Do not let the pump run dry. Pump must be completely submerged for proper operation and cooling.

Operate in fresh water only. Avoid heavily chlorinated water and water with high pH levels.

Do not lift the pump by its power cord.

CARE AND MAINTENANCE

Clean the pump regularly depending upon the environment in which it is operated. Clean the pump when it is visibly soiled or when a drop in performance is detected. Before cleaning, always disconnect the pump from the power supply. Remove all parts from the pump and clean in warm, soapy water. Disassemble the pump housing and remove the impeller housing to expose the impeller assembly. Use a soft cloth or brush to clean the impeller assembly and the inside of the impeller housing.

TROUBLESHOOTING

If the pump fails to operate:

- Check to make sure the power cord is plugged in and the receptacle has power running to it.
- Check the pump outlet and tubing, nozzles, features, spouting statues etc. for kinks or obstructions.
- Remove the inlet screen and/or pump cover, and impeller housing to expose the impeller. Turn the impeller to ensure that it is not broken or jammed.

If the performance of the pump is not satisfactory or the pump does not flow evenly:

- Check to make sure the pump is completely submerged in water
- Check to make sure the impeller and the housing are clean
- Adjust flow control

TECHNICAL SPECIFICATIONS

Model	Liters/ Hr	Voltage	Watts	Max Head cm
AD40600	2400	120	37	250
AD40800	3200	120	55	400
AD41001	4000	120	80	450

SAFETY NOTES

These pond pumps are carefully inspected and tested to ensure both safety and operating performance. However, failure to follow the instructions and warnings in this guide may result in pump damage and/or serious injury. There will be no liability for any damage resulting from failure to observe this guide's instructions.

SAFETY

1. To reduce risk of electric shock, always disconnect the pump from the electrical supply before handling or cleaning the pump.
2. To reduce risk of electric shock, inspect the pump and cord for damage before installation or maintenance — replace pump if damage is found.
3. Do not exceed proper voltage as indicated on the pump's cord label. Pump must be connected to an approved ground fault circuit interrupter (GFCI) receptacle.
4. Always keep the cord away from high temperature.
5. To achieve best performance, the pump should be placed on a flat surface and completely submerged in the water.
6. Do not let the pump run dry as this will shorten the pump's life.
7. Do not lift, hang, or pull the pump by the power cord.

Regular maintenance must be performed on any warranted item based upon this Owner's Guide recommendations. **REMEMBER** to always unplug the pump before handling. Do not exceed voltage on the pump. Product is not to be operated below 0°C — as freezing damage may occur. Do not pump heated liquids, and always keep the cord away from heat and high temperature. Connect the pump to an electrical supply with the proper voltage and fitted with a Residual Current Device.

LIMITED WARRANTY

This pump is warranted to the original user against defective materials and workmanship for a period of 24 months. Our limited warranty does not cover any costs associated with the installation or removal of products subject to warranty claims or the cost of return of the pump. The warranty will commence from the date of purchase. Replacement liability is limited to any part or parts of the unit which have failed due to defective material or workmanship. Proof of purchase is required for all claims against the limited warranty. This warranty does not extend to damage of the product or part resulting from accident, misuse, alteration, neglect, abuse, improper installation or normal wear and tear to the product(s). This limited warranty extends only to the original user of the product.

For more information on this and other products, please visit our web site:

www.angelodecor.com

To contact us regarding this unit, your options include:

Email: customersupport@angelodecor.com | Phone: (780) 453 - 6646 | Fax: (780) 453- 6620

Angelo Décor International Inc. | 15840 – 118th Avenue | Edmonton, AB | T5V 1C4

Compatible with:

Pro Grade 10 Piece Nozzle Kit

AD42126

Filter Extension

AD46111

Replacement filter

AD46212