



Thank you for buying an Angelo Decor Fountain!

We hope you will find these instructions helpful in setting up your fountain.

If you have any issues with this item, please **DO NOT** return the unit to place of purchase. Please visit our web site, www.angelodecor.com, for assistance and warranty information.

First unpack carton carefully, arranging parts safely in your working area.



Pump cord go through the cordpipe



Pass the supplied light cord and tubing through the opening in the orb.



Connect tubing to the pump.



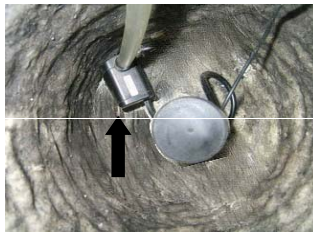
Pump is preset to full, adjust lower if less splash is desired.



Feed the pump and light cord through the cordpipe in the base. Align the cord with the groove at the base.



Cover pipe by firmly fitting rubber cap on pipe.



Be sure it sits flat inside the housing without any kink in the hose.



Align the metal pin with the fitting and set the top in place.



Firmly press the light and holder into place as shown.



Add decorative rocks for finished look.



Attach light cord to transformer. Be sure it is tight. Place transformer in a secure area, preferably under cover. While this unit is rated for outdoor use, it should not be fully submersed in the water.



The final assembly should look like this



Now simply fill with clean water and plug into a grounded GFCI outlet
We recommend keeping bowl 3/4 full of water to avoid pump burnout.