

## Thank you for buying an Angelo Decor Fountain!

We hope you will find these instructions helpful in setting up your fountain.

If you have any issues with this item, please **DO NOT** return the unit to place of purchase.

Please visit our web site, [www.angelodecor.com](http://www.angelodecor.com), for assistance and warranty information.

**First unpack carton carefully, arranging parts safely in your working area.**



Arrange all parts in the working area.



Feed the cord from the light and the tubing through the opening at the top of the orb.



Once you have fed the cord and tubing all the way through, firmly press the light in place as shown above.



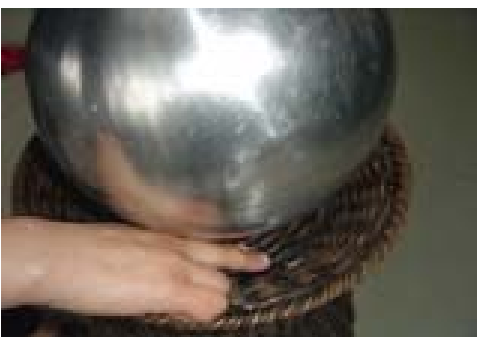
Now feed the cord for the light and the pump through the cord pipe as shown above.



Align both cords with the groove at the base.



Connect the pump to the tubing from the orb.



Twist and lock the orb to the main section of the fountain by aligning the tongue with the groove.



Connect the light cord to the transformer.

Final assembly should look like this



Now simply fill with clean water and plug into a grounded GFCI outlet

**We recommend keeping bowl 3/4 full of water to avoid pump burnout.**