

## Thank you for buying an Angelo Decor Fountain!

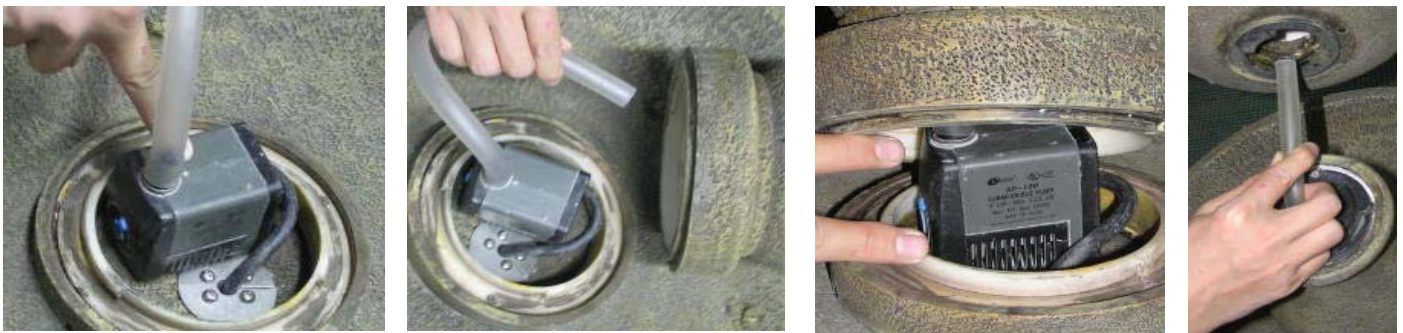
We hope you will find these instructions helpful in setting up your fountain. If you need more information to properly care for your fountain, please **DO NOT** return the unit to place of purchase.

Please visit our web site, [www.angelodecor.com](http://www.angelodecor.com), for assistance and warranty information.

**First unpack carton carefully, arranging parts safely in your working area.**



Pump is pre installed with seal. Set the pump to desired strength. We recommend 2/3 to full strength for best effect. Run cord through base, and into groove at bottom. Secure bowl in place



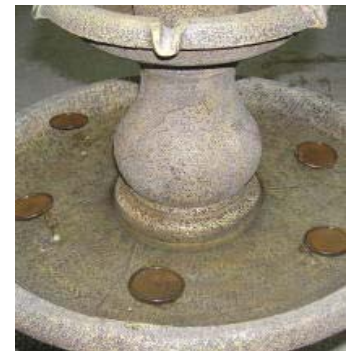
Pump should sit flat on bottom. Attach tubing. Feed through riser. Secure riser in place. Feed tube through top bowl.



Tube through bowl. Secure bowl in place. Attach tube firmly to pipe on top unit, and secure in place.



The splash guard is an option if you are concerned about water loss. You may add 1, or all 6 based on your visual preference. The use of these units will allow you to run the unit without adding water for as long as 7 days, depending on your climate. Without splash guard, you may have to add water to the fountain after 24 hours of continuous use.



Simply fit splash guard into place, and adjust with placement of water in middle, and height slightly above water line.

Now simply fill with clean water and plug into a grounded GFCI outlet

**We recommend keeping bowl 3/4 full of water to avoid pump burnout.**