

Thank you for buying an Angelo Decor Fountain!

We hope you will find these instructions helpful in setting up your fountain.

If you have any issues with this item, please DO NOT return the unit to place of purchase. Please visit our web site, www.angelodecor.com, for assistance and warranty information.

First unpack carton carefully, arranging parts safely in your working area.



Feed pump cord through cord pipe and down along the base of the fountain.



Align pump cord with groove at the base.



Pump is set to full. Reduce flow if lower splash is desired.



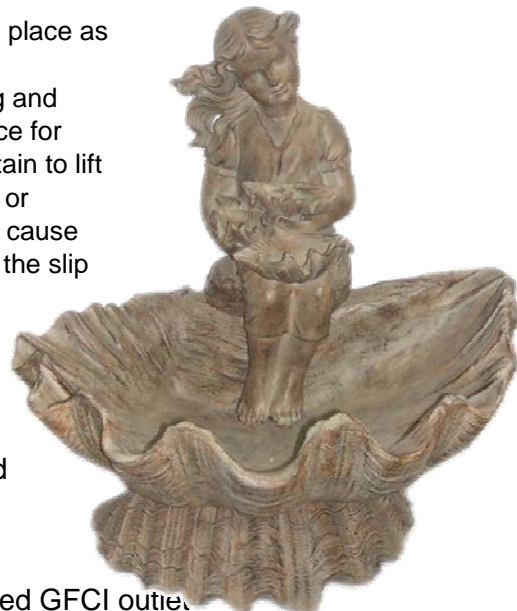
Connect the tubing to the pump.



Slide the top piece in place as shown above.

Note: When installing and removing the top piece for maintenance, be certain to lift straight up. Twisting or bending the joint can cause stress or damage to the slip fit mechanism.

The final assembly should look like this →



Now simply fill with clean water and plug into a grounded GFCI outlet.

We recommend keeping bowl 3/4 full of water to avoid pump burnout.